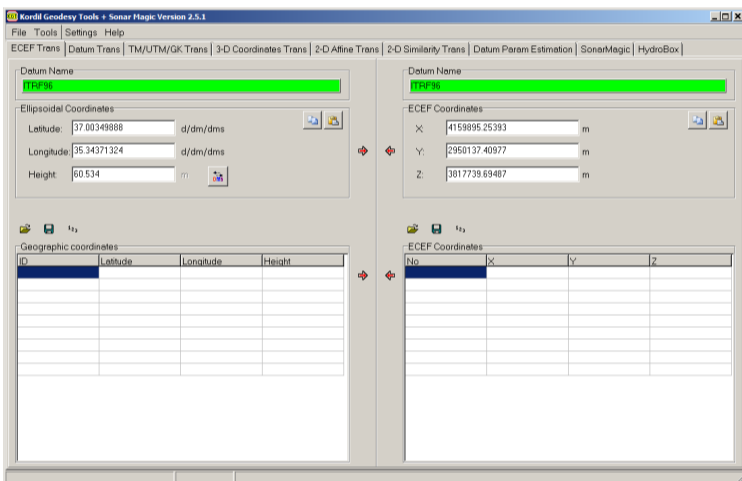


Kordil Bathymetry Studio — KBS

All-in-one-Pole bathymetric system and hydrographic survey software

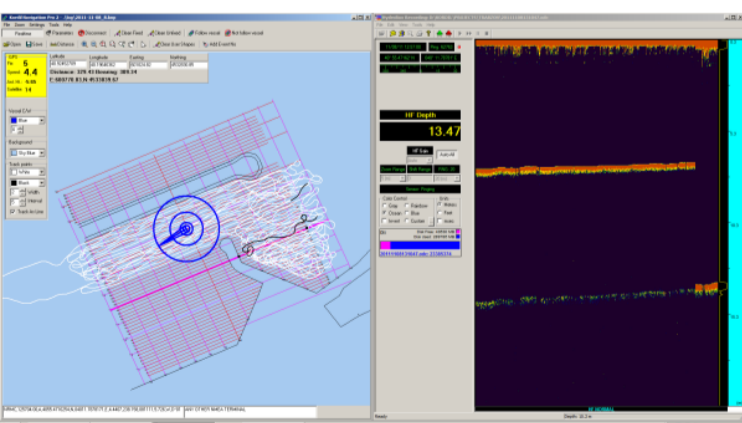
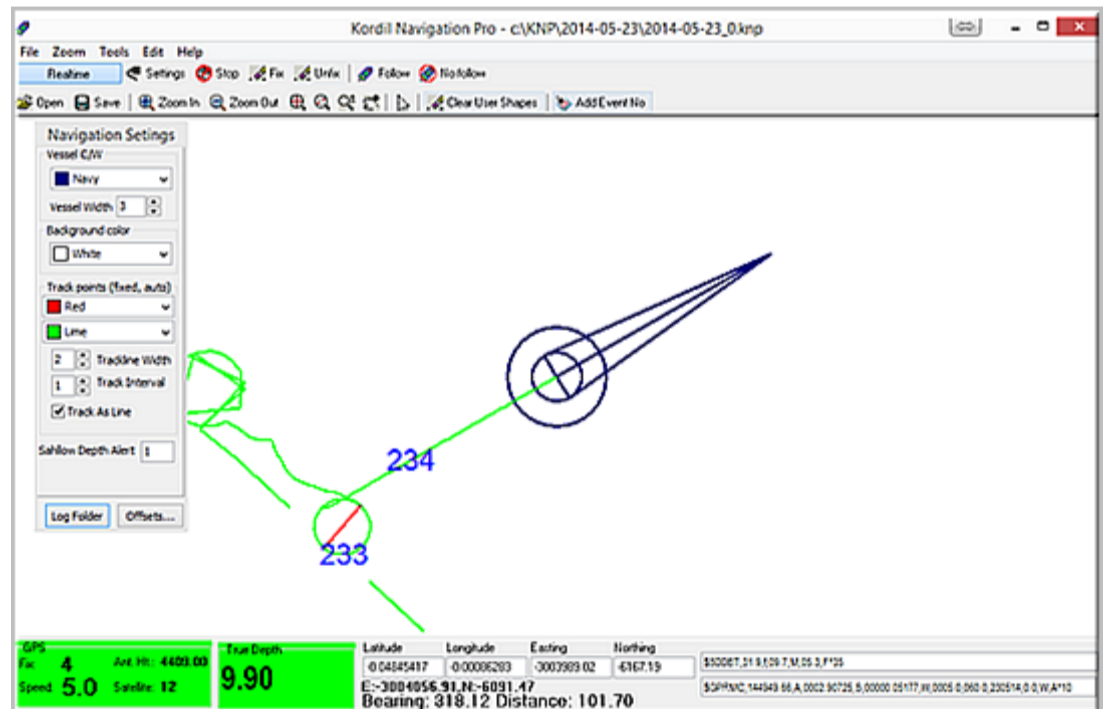
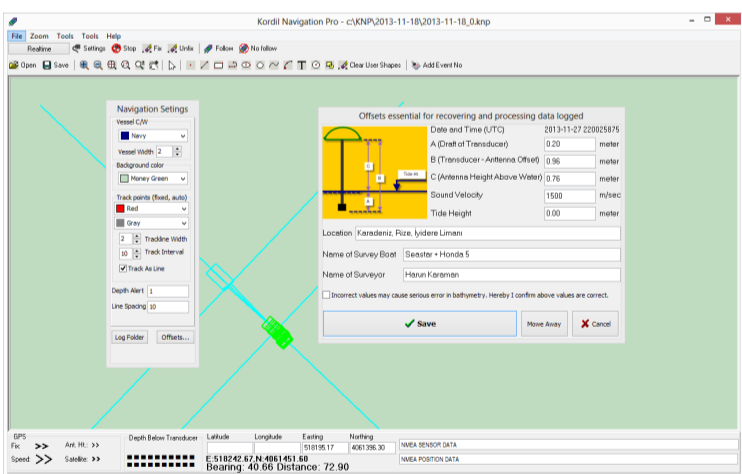
Key futures:

- Precision singlebeam echosounder survey (compatible almost with all brands makes and models)
- All survey components are unified with an easy-to-mount pole making it an all-in-one-pole hydrographic survey system
- Featured with Direct DXF support for background mapping and run-line tracking
- Supports all NMEA or similar message strings through serial ports
- Capable of simultaneous logging from the 2 sensors with millisecond (1/1000 sec) precision
- Ultra-fast simultaneous data reading and logging from serial ports with minimized latency
- Supports Transverse Mercator Projection and its variations such as UTM, GK
- Featured with real-time datum definitions and datum transformation
- Displays basic positioning information for the precision navigation
- Computes real-time heading based on CMG (course made good) for all in one pole surveys
- Featured with save-all that saves entire interface and logs a backup copy
- Track-lines and run-lines that are displayed on the same screen enables for whole day survey



Some applications include but not limited as follows:

- Can be easily utilized for projects that require hydrographic survey for work progress
- Checking and verifying previously sailed track-lines for verification
- Universal raw data logging for NMEA sensors in use with GPS for post processing
- Remotely controlled applications to follow a remotely controlled vehicles
- Route mapping
- Ancillary positioning surveys for subsea benchmarks, weather, sound velocity, heading, radar etc.



Authorized distributor

www.kordil.com